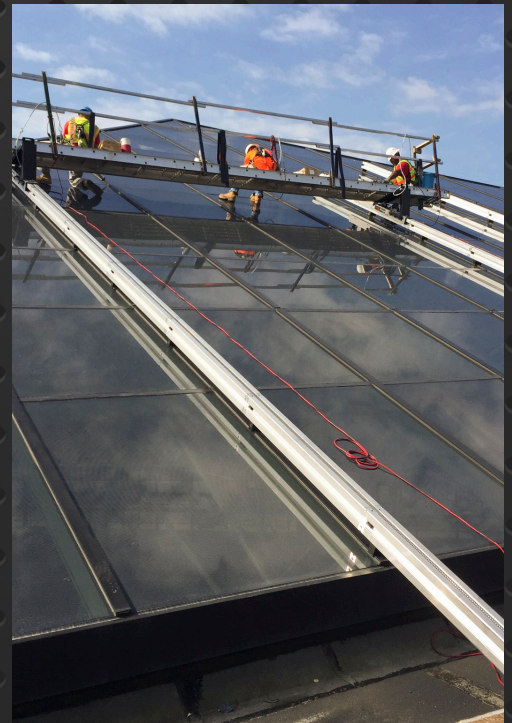


# ReechCraft™ **PowerMAST**™

## Unmatched **PORTABILITY** and **SIMPLICITY**

*Quickly Assembled • No-Tools Mast Connection System • 1500 lb Lift Capacity to 200+ ft*





# ReechCraft™ **PowerMAST**

**The PowerMast offers unmatched portability and simplicity for a wide variety of wall access needs up to 200+ feet!**

## **SAFETY**

- Complies with safety standards
- Works with swing stages and walkboards
- Freestanding base option

## **ULTRA LIGHTWEIGHT & PORTABLE**

- Quick assembly
- 1,500 lbs capacity
- Fits in the back of a truck or van

## **SIMPLICITY**

- No electronics
- No hydraulics
- No batteries

## **TIED SYSTEM SPECIFICATIONS**

DESCRIPTION	SPECIFICATION
Platform Support Dimensions (Twin)	Accepts up to 30 in. Wide Platform Deck
Minimum/Maximum Platform Length (Twin)	Any Length within 1500 lbs System Capacity
Basket Dimension (Single)	30 in. x 6.5 ft
Maximum Height	200+ ft
Maximum Load Capacity Twin Mast	1500 lbs (750 lbs per Mast)
Tie Spacing	15 ft
Climbing Speed	Up to 20 FPM (Depends on Load and Drill Size)
Drive System	120:1 Clutch Protected Transmission
Operating System	1/2 in. 8 amp Min Drill Motor
Required Voltage	110 VAC Single Phase
Safety Devices	Drop/Stop Lock Pawl, Overload Clutch, Overspeed
Climbing Unit Weight	65 lbs
5 ft Mast Weight	32 lbs
32 in. Mast Weight	19 lbs
Tie Weight	7 lbs
Tie Pullout Force	750 lbs per Tie
Mast Section	5 in. x 6 in. Aluminum with Galvanized Steel Track
Mast Connection Type	Interference Locking Cam
Base Dimension	10 in. x 10 in. Steel/Rubber Plate
Total Weight on Base Plate	2150 lbs
Surface Area of Base Plate	100 sq in.
Surface Pressure from Base	21.5 psi (2150 lbs/100 sq in.)

### **MID TO HIGH ACCESS NEEDS**

The PowerMast is stable at any height up to 200+ ft.

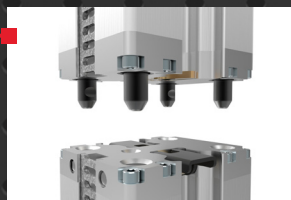
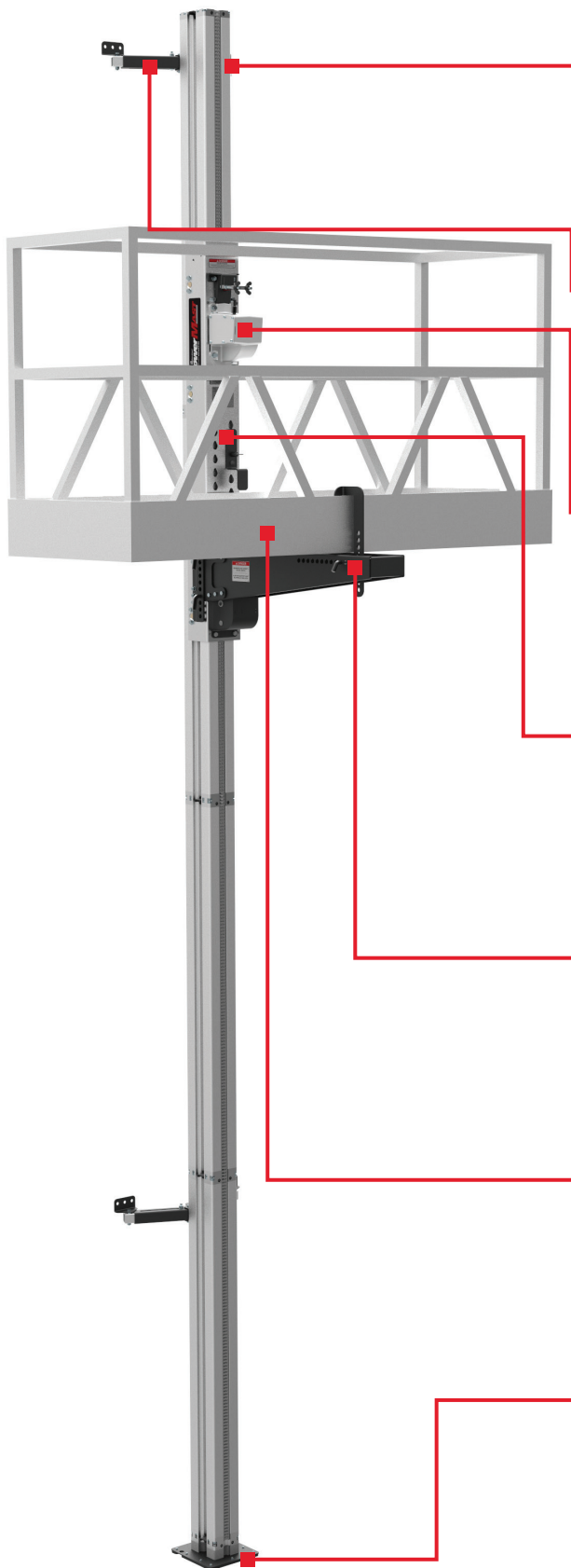
### **COMPACT DESIGN**

The lightweight, portable and compact design allows for easy setup at any job site.

### **1500 LB LIFT CAPACITY**

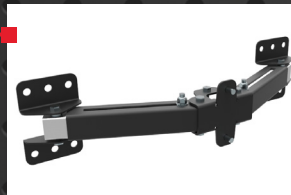
The PowerMast is ground supported and has a lift capacity of up to 1500 lbs per twin system.

# Portability Redefined.



## TOOLS-FREE MAST CONNECTION

The PowerMast features a quick, tools-free connection to ensure efficiency and safety while stacking masts. Each mast includes a redundant locking feature that requires each mast connection to be locked in place before raising the climbing unit.



## ADJUSTABLE TIE

The PowerMast Adjustable Tie provides a wide variety of attachment options for the PowerMast system. Bring the mast 6 in. to 16 in. away from the wall with this bracket (extra extension tubes can be made to extend further).



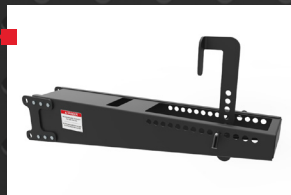
## GEARBOX

ReechCraft's exclusive, easy-to-use drill operation features a durable gearbox that eliminates the use of electrical components and keeps the system lightweight.



## CLIMBING UNIT

The PowerMast Climbing Unit features a gearbox with overload clutch, overspeed break and drop stop lever.



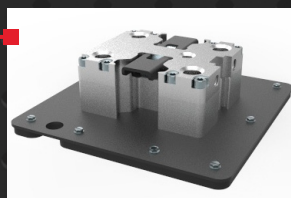
## PLATFORM SUPPORT

The PowerMast Platform Support fastens to the climbing unit with four quick locking pins. It is adjustable in order to accommodate most platforms and rails systems.



## EASY-TO-ATTACH PLATFORM AND BASKET

Compatible with up to 30 in. modular deck or railed walkboards. The 6 ft Platform Basket can fit two people comfortably, is lightweight, has easy access and works great as a freestanding option.



## BASE FOOT

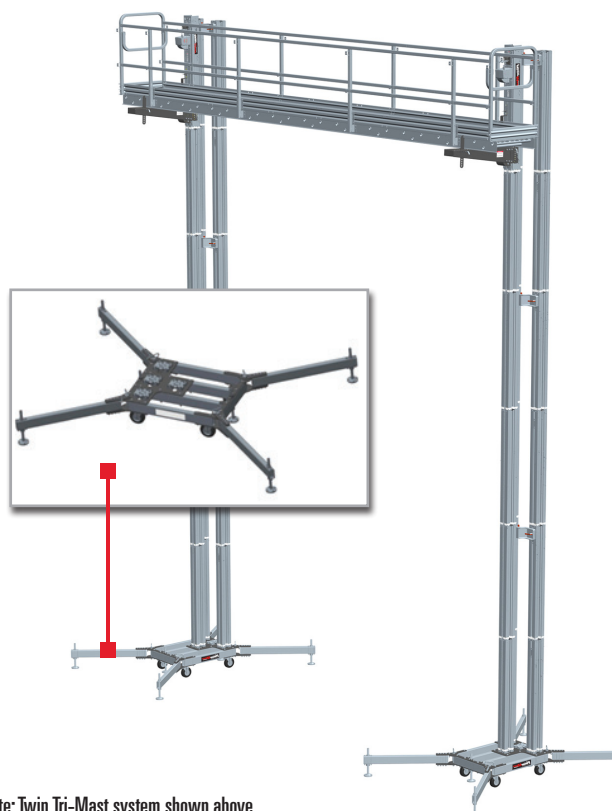
The PowerMast Base Foot uses the same quick connection as the masts, while providing a bottom stop for the climbing unit. This base also can be anchored to the ground surface.



## FREESTANDING SYSTEM SPECIFICATIONS

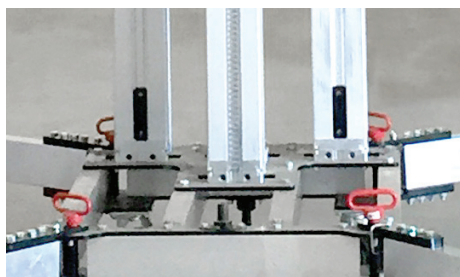
### FEATURES

- Can be used with a single 2m platform
- Tied or untied configurations
- Single or twin mast configurations
- Work up to 52 ft indoors. 33 ft outdoors



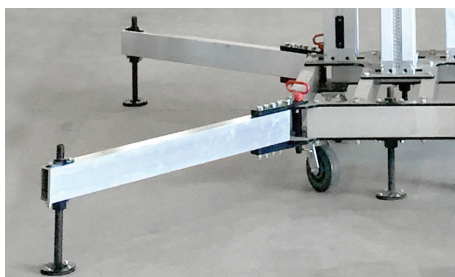
Note: Twin Tri-Mast system shown above.

DESCRIPTION	SPECIFICATION
Platform Support Dimensions (Twin)	Accepts up to 30 in. Wide Platform Deck
Minimum/Maximum Platform Length (Twin)	Any Length within 1500 lbs System Capacity
Basket Dimension (Single)	24 in. x 6.5 ft
Maximum Platform Height (Tied)	200+ ft
Maximum Height (Untied Indoor)	46 ft (Platform) - 52 ft (Working)
Maximum Height (Untied Outdoor)	27 ft (Platform) - 33 ft (Working)
Maximum Load Capacity Twin Mast	1500 lbs (750 lbs per Mast)
Maximum Tie Spacing	10 ft
Maximum Climbing Speed	40 FPM
Drive System	120:1 Clutch Protected Transmission
Operating System	1/2 in. 8 amp Min Drill Motor
Required Voltage	110 VAC Single Phase
Safety Devices	Drop/Stop Lock Pawl, Overload Clutch, Overspeed Brake
Climbing Unit Weight	65 lbs
5 ft Mast Weight	32 lbs
32 in. Mast Weight	19 lbs
Tie Weight	12 lbs
Tie Pullout Force	750 lbs per Anchor
Mast Section	5 in. x 6 in. Aluminum with Galvanized Steel Track
Mast Connection Type	Interference Locking Cam
Base Dimension	106 in. x 80 in.



### QUICK ATTACHMENT

Four quick mast attachment locations.



### SWIVELING OUTRIGGERS

Outriggers are adjustable.



### CASTERS

Casters for easy positioning indoors.